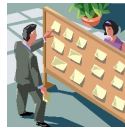




<b>BOARD MEMBERS</b> Page 1	<b>Membership</b> Page 1	<b>MEETING CALENDAR</b> Page 2	<b>JOB POSTINGS</b> Page 2	<b>Committees</b> Page 2	<b>SCHOOL UPDATES</b> Page 3-4	<b>Fall Bi-State Meeting</b> Page 5
--------------------------------	-----------------------------	-----------------------------------	-------------------------------	-----------------------------	-----------------------------------	--



## Board Members

**President:**

Sharon Korzdorfer, MPA RHIT - [skorzdorfer@saint-lukes.org](mailto:skorzdorfer@saint-lukes.org)

**President-Elect:**

Amanda Bergman, RHIT - [abergman@kumc.edu](mailto:abergman@kumc.edu)

**Past President:**

Jennifer Morrison, RHIA - [Jennifer.Morrison@cerner.com](mailto:Jennifer.Morrison@cerner.com)

**Secretary:**

Sandra Johnston, MEd, RHIA, CPC - [sjohnsto@kumc.edu](mailto:sjohnsto@kumc.edu)

**Treasurer:**

Trudi Taylor, RHIA - [TTaylor1@cerner.com](mailto:TTaylor1@cerner.com)

**Correspondence Coord:**

Angie Fergen, RHIA - [afergen@saint-lukes.org](mailto:afergen@saint-lukes.org)

**Issues Coord:**

Donna Newland, RHIT - [dnewland@saint-lukes.org](mailto:dnewland@saint-lukes.org)

**Contact KCHIMA:** [kansascity.hima@gmail.com](mailto:kansascity.hima@gmail.com)

Want to become a **member**? Complete an application [2010 Membership Application](#)

**MEETING CALENDAR****February 16th, 2010** 530 PM-630 PM

\*Technology: eICU Tour

\*(1 CEU)

Saint Luke's Health System IT Tech  
Center - Lee's Summit MO**March 16th, 2010** 530 PM-630 PM\*Clinical Data Management: Spinal  
Surgery AHIMA Audio conference

\* (1 CEU)

KU Westside Cancer Clinic - details to  
come**April 17th, 2010** 900 AM-200 PM\*Clinical Foundation - Speakers include  
massage therapist, acupuncturist,  
alternative medicine and more

\*(4 CEU)

KU School of Nursing Auditorium

**May 2010** Break**June 15th, 2010** 530 PM to 630 PM

\*Management Development - Tom Field

KU Medical Center - 1014 Orr Major -


**July 20th, 2010** Break**August 17th, 2010** 530 PM to 630 PM

\*TBD

**October 16th , 2010** 900 AM to 300 PM

Penn Valley Health Science Technology

## Job Postings

 **PRIMARIS** is seeking a Coding Specialist to be responsible for overall DRG validation in our clinical review department. Current RHIA or RHIT license required as well as inpatient coding experience. For complete job requirements visit [www.primaris.org/employment](http://www.primaris.org/employment) or contact us at 573-817-8300 ext. 202. To be considered, you must submit a completed employment application available via our website or by request. Deadline: 06/30/10. EOE

### Committees:

Want to get involved? Contact a board members to join a committee today!

- ▶ Bylaws Committee
- ▶ Membership/Retention Committee
- ▶ Scholarship Committee
- ▶ Nominating Committee
- ▶ Website Committee
- ▶ Newsletter Committee



 **Out KCHIMA's Website**

<http://kchima.org>

Do you have something you would like to see posted on the website? Do you have something interesting to share?

Contact us at [kansascity.HIMA@gmail.com](mailto:kansascity.HIMA@gmail.com)



## METROPOLITAN COMMUNITY COLLEGE - PENN VALLEY

Workforce needs for EHR implementation and upcoming ICD-10 / 5010 standards are just a couple of initiatives creating exciting times for HIM. Our 2009 enrollment doubled over the prior year and the 2010-2011 enrollment is at maximum with a waiting list. While all of this is cause for joy and relief to know that a qualified workforce is in the making for HIM staffing needs in the community, it also poses a challenge. Now more than ever your support is needed in giving these up and coming HIM professionals the hands-on experience they require as part of a quality education. The ever expanding remote HIM workforce creates a different dynamic for engaging in PPE (professional practice experience). AHIMA has recently increased the CE units to 5 per year for participation in PPE. We have some organizations that rotate remote staff through the department to assist with PPE. Others have created a virtual experience, where the student comes on site but works online with a remote employee. Likely you can think of other approaches. We want to thank you in advance for supporting PPE and look forward to working with you to create a pool of quality, well-trained professionals to meet your workforce needs.

Speaking of workforce, a number of ARRA-HITECH grants have been let over the past few months. One such grant for training EHR implementation workers went to five regional consortiums. Kansas and Missouri are in Region C that is led by Cuyahoga Community College in Cleveland, OH. St. Louis Community College and Johnson County Community College are two of the seven community colleges in Region C consortium. JCCC was named in the grant in part due to their affiliation with MCC-Penn Valley's HIT program, so as such we are playing a support role in JCCC's grant efforts. Training will begin in September and will target IT and healthcare professionals interested in doing EHR implementation work. So if you know of anyone in these disciplines who are interested in honing their EHR implementation skills you may want to make them aware of this opportunity. More details on the program will be forthcoming as it becomes available.

This fall we will be hosting MHIMA-KHIMA, KCHIMA-AHDI, and KC AAPC as guests at our wonderful new Health Science Institute. Again, I would encourage you stop by and take a tour of this state-of-the-art healthcare instructional facility. Please call us, we'd be happy to show you around. Have a great summer.

Jennifer Scott, MLA, RHIA – Program Director

### Missouri Western State University

The Health Information Technology program at Missouri Western State University has grown by leaps and bounds since its inception in 1994.

Located in northwest Missouri, the program has provided an HIT educational opportunity to a multi-state area. Now that all of the program is offered online, its expansion has gone national.

Students can choose to begin with the certificate program in preparation for an entry level position in the HIM industry or they may choose to take the more popular option of the Associate of Applied Science degree program. The flexibility offered by the program has been a great asset and a welcome opportunity for working adults. For those students who already have an AAS degree and want more, pending approval from CBHE, a bachelor's degree in health informatics could be available as early as fall 2010.

Over the years in the HIT education field, Marsha Dolan, MBA, RHIA, FAHIMA, HIT Program Coordinator, has seen a multitude of changes and challenges. "The electronic healthcare age has and is continuing to provide so many new opportunities for the students. We are working to ensure we keep our students current using cutting edge technologies and practices." The computer lab available to students helps ensure they get "hands on" experience with current software. The program is also working to incorporate AHIMA's Virtual Lab in classes throughout the student's HIT affiliated classes.

If you are interested in learning more about the HIT program at Missouri Western State University, feel free to contact Marsha Dolan at 816-271-4415 or apply online at <http://www.missouriwestern.edu/admissions/apply.asp>.

# School News

## University of Kansas

The “lazy days of summer” have cloaked the city, but inadvertently forgot our program! Although students are away on summer jobs, the faculty remain busy in their offices- creating new courses to meet the needs of the HIM community, updating their class materials, and partaking in summer conferences (Assembly of Education – AHIMA).

This past week we held our HIM Advisory Council meeting. Our main topic, “Managing Information to Support Quality Care,” brought cutting edge information to our “Friends of HIM.” Karl Koob, MMIS, RHIA, CPEHR, FAHIMA, Department Chair informed the members about the recent Faculty Retreat – mentioning the upgrades to our online Bridge Program (offered to our HIM undergraduate students interested in achieving a MHSa degree after completion of their Bachelor’s degree). It is of interest to note that the BS-HIM/MHSA Track has had 21 graduates of the program since its conception.

Sandy Johnston, MEd, RHIA, CPC, faculty, gave a concerned presentation on the topic of PPEs (Professional Practice experiences). The HIM Program is gravely in need of support and help from the professional community to give our students their afternoon practical work experiences that offer value and information for these future HIM professionals. If you, the reader, is interested in creating a meaningful experience for an HIM student for three hours on one afternoon during the fall or spring semester, please email Sandy of your interest – [sjohnsto@kumc.edu](mailto:sjohnsto@kumc.edu). CEs are now offered by AHIMA for your efforts with the education of our HIM’ers.

A lot was accomplished at the Advisory Council meeting, discussions were lively, and the HIM Program was rewarded with the receipt of knowledge of the needs of our HIM community. Thank you to those professionals who took time from your busy schedules to attend.

A new Masters of Science in Health Informatics will be offered this coming fall! Classes will develop professionals with valued skills in analysis, design, implementation, and evaluation of information systems. We have had a voice in the creation of this exciting degree and are one of the members of the advisory committee, along with participatory members from the KU School of Nursing, KU Center for Health Informatics, Health Policy and Management Master’s program, Preventative Medicine, and KU Graduate Studies.

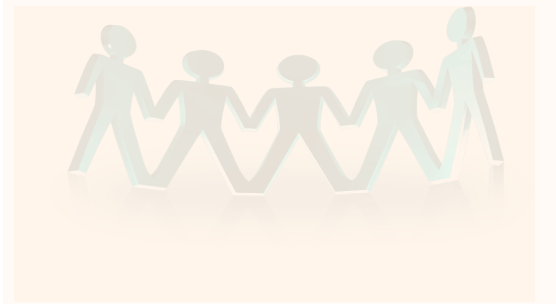
The HIM Program hopes everyone is having a safe and restful summer.



# HIM PROFESSIONALS UNITE TOGETHER



September 16-17, 2010



Holiday Inn Kansas City Southeast  
(previously known as Sheraton Kansas City - by  
Sports Complex)

Visit the web sites for details and registration!

[www.mohima.org](http://www.mohima.org) or [www.khima.com](http://www.khima.com)

