

# MHIMA e-Alert

September 15, 2009

Volume 13

Visit the MHIMA Website at:

<http://www.mohima.org/AboutMHIMA.html>

[Click Here For Past Issues of e-Alert:](#)

**MHIMA** *an affiliate of AHIMA-American Health Information Management Association*

## INSIDE THIS ISSUE

*August Shooting Star* .....[Page 2](#)

*ICD 10 Myths and Facts*.....[Page 2](#)

*ICD 10 Implementation CoP*.....[Page 2](#)

*Pocket Guide of ICD10 and ICD 10 PCS*.....[Page 3](#)

*What's New with H1N1 Flu*.....[Page 3](#)

*H1N1 Vaccine Adverse Event Reporting*.....[Page 3](#)

*Stay Informed with AHIMA E-Newsletters*.....[Page 4](#)

*Upcoming AHIMA Bylaws Amendment Vote*.....[Page 4](#)

*August Hot Topics Survey and Results*.....[Page 5](#)

*Calendar of Upcoming Events*.....[Page 6](#)

*Directory*.....[Page 7](#)



## President's Message

Fall is in the air; the days aren't as warm as they have been and the nights are much cooler. With fall comes back to school, the upcoming World Series, the start of the football season, and the AHIMA Annual Convention. This year, there is one important bylaws change to which the MHIMA Delegates will need to cast a ballot. You recently received an e-blast from us regarding the proposed change to the way AHIMA apportions the delegates to the states. Under the proposal, MHIMA will lose one delegate. I have opened a discussion thread on the [Missouri CoP](#) with a link to the proposed change and have posted a poll; please visit the CoP, read the proposal and give us your opinion.

At the last few Board Meetings we have had much lively discussion regarding where to have the MHIMA Annual Meeting. With the exception of the 2009 meeting, the past several years the meeting has been held in the St. Louis area. This causes some members from other parts of the state to feel that MHIMA does not care about them and their needs. Please trust me, this is not true. There are some hard realities that we review and discuss before deciding where to have the meeting. One of our purposes as an organization is to provide continuing education to our members at a reasonable cost. The facts are that when the meeting is held in the St. Louis area, attendance is higher than when we have it anywhere else. This year, we had 150 people at the Lake for our meeting; last year, we had well over 230 in St. Charles. Our vendor attendance was down by about 1/3 also. Vendors tell us they want to attend, but need to have a place that is easy for travel. For many of them, this means having a full service airport. Traditionally, our attendance is highest when the meeting is in St. Louis, second highest when we meet in Kansas City. The largest group of our members lives within an hour of St. Louis and the second largest group lives within an hour of Kansas City.

With that said, the Board has discussed having the 2011 meeting at the [Chateau on the Lake](#) in Branson. Branson has a new airport, making air travel fairly easy for both members and vendors, is a reasonable drive for those who live in the mid to southwestern part of the state, and is relatively equidistant from St. Louis and Kansas City. Our question to you, our members, is **“would you attend this meeting in Branson, or is it too far away for you to consider?”** We need to decide soon; it takes 12-18 months to get a location selected, sign a contract for the facility, and plan the meeting. Please send your

### MHIMA Vision:

*MHIMA will dedicate efforts and resources to serving members by increasing, promoting, and perpetuating the visibility of the health information management profession through education, communication and advocacy.*

comments regarding this to me at [president@mohima.org](mailto:president@mohima.org) or to our President-elect, Jennifer Melvin at [president-elect@mohima.org](mailto:president-elect@mohima.org). You can also respond on the Hot Topics Survey in this edition of the e-Alert on page 4.

Well, I've taken enough of your time for now. Please take a few minutes to give us your feedback regarding the bylaws amendment and the Annual Meeting. The MHIMA Board truly wants to do the best we can to serve every one of our members. I am truly blessed to have such a great group of dedicated people serving on the Board with me.

Have a great month and enjoy the rest of the newsletter. Some holidays to celebrate this month are:

- September 12 National Chocolate Milkshake Day
- September 14 National Cream-filled Donut Day
- September 17 National Apple Dumpling Day
- September 25 National Comic Book Day
- September 28 National Ask a Stupid Question Day

*Jeff*



### *August Shooting Star Recipient*

The board has nominated Nancy Pitts, RHIT for the August AHIMA Shooting Star Award. Nancy has been a regional board member for the Mid Missouri Regional Association for the past 4 sessions and has been an active participant in collaboration of the bi-annual regional meetings. Her efforts have been exemplified through her professional and timely coordination of regional meetings with wonderful input and recruitment of excellent speakers. One speaker in particular was the FBI agent that presented at the March 09 Regional Meeting. This speaker was recruited as a guest speaker for almost a year and with Nancy' persistence we were able to have him as a guest speaker. His presentation was very informative and timely for our association with Corporate Compliance issues and the upcoming RAC Program.

Nancy is a wonderful mentor and an inspiration to our profession!  
Thank you Nancy for all you do!

### *ICD-10 Myths and Facts*

The Centers for Medicare and Medicaid Services offers a fact sheet to present correct information in response to some myths regarding ICD-10.

[View the myths and facts.](#)

### *Contribute to the ICD-10 Implementation CoP*

Did you know there is an [ICD-10 Implementation Community of Practice](#)?

Click on the link to view community announcements, FAQs, resources, and more. Participate in the community discussions by posting a thread or commenting on another post.



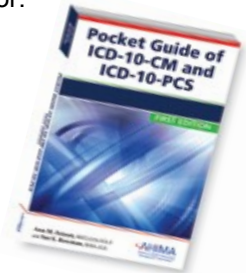
## *Pocket Guide of ICD-10 and ICD-10-PCS*

The *Pocket Guide of ICD-10-CM and ICD-10-PCS* is your source to gain a basic understanding of ICD-10-CM and ICD-10-PCS. HIM and coding professionals—as well as information technology department staff and vendors—require this crucial information during the transition from ICD-9-CM/PCS to ICD-10-CM/PCS.

If you are in a field related to HIM, you will benefit from this brief overview and summary of ICD-10 instead of wading through the wealth of material published in granular detail that may not apply to your business sector.

- Provides concise, easily approachable reference material
- Explains key issues to pick up and take to IT department
- Addresses why the change from ICD-9 to ICD-10 is needed
- Outlines transition requirements

[Pre-order your copy](#) today for a late 2009 delivery.



### *What's New with H1N1 Flu*

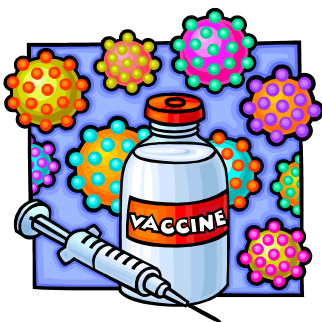
The World Health Organization (WHO) declared the novel H1N1 influenza (also referred to as the swine flu) virus as a pandemic on June 11. At that time, more than 70 countries and all 50 states had reported cases of the H1N1 infection. The H1N1 flu spreads in the same way that regular seasonal influenza viruses spread, mainly through coughs and sneezes, but it may also be spread by touching infected objects. Symptoms include fever, cough, sore throat, body aches, headaches, chills, and fatigue.

Here are some interesting facts and figures regarding the H1N1 flu virus in the US in 2009:

- 7,983 hospitalized cases and 522 deaths reported since April
- It is estimated that more than 1 million people became ill with H1N1 between April and June
- People aged 5-24 have the highest incidence of the disease, followed by 0-4 years of age
- Number of deaths was highest among people 25 to 49 years of age (39 percent), followed by 50-64 years of age (25 percent), then 5-24 years of age (16 percent)
- In contrast, 90 percent of seasonal influenza deaths occur in people 65 years of age and older

The Centers for Disease Control and Prevention (CDC) updates the [H1N1 Flu Web page](#) weekly. Included on the CDC Web site is the FluView map which shows the weekly influenza activity estimates for the states and territories.

**Reference:** Centers for Disease Control and Prevention. Available online at <http://www.cdc.gov/H1N1Flu/>.



### *H1N1 Vaccine Adverse Event Reporting*

This fall, a new H1N1 flu vaccine will be available to the American population. The CDC urges that information on all adverse events be obtained as quickly as possible. If patients who receive the vaccine become ill and are hospitalized after vaccination, the CDC asks that VAERS staff requests for patient hospital records be completed in the most thorough and efficient manner possible.

CDC and FDA are public health authorities as defined by the Health Insurance Portability and Accountability Act (HIPAA), Standards for Privacy of Individually Identifiable Health Information; Final Rule (Privacy Rule) [45 CFR §164.501]. Pursuant to 45 CFR §164.512(b) of the Privacy Rule, covered entities such as your organization may disclose, without individual

authorization, protected health information to public health authorities " . . . authorized by law to collect or receive such information for the purpose of preventing or controlling disease, injury, or disability, including, but not limited to, the reporting of disease, injury, vital events such as birth or death, and the conduct of public health surveillance, public health investigations, and public health interventions . . . "

The CDC asks healthcare professionals to treat requests for records from VAERS as high priority. Questions can be directed to [Vaccinesafety@cdc.gov](mailto:Vaccinesafety@cdc.gov) or call (404) 639-8256 between 8 a.m.-5



## *Stay Informed with AHIMA E-Newsletters*



Stay up-to-date on the latest HIM information. Gain insight with featured articles from the AHIMA's e-newsletters. Click on the links for more details.

[Perspectives in Health Information Management](#), AHIMA's newly formatted, online, peer-reviewed research journal.

[Academic Advisor](#) is a quarterly e-newsletter distributed to HIM educators. Topics covered include tools for educators, tips for success, financial aid opportunities, symposium information, CAHIIM goals, and hot topics.

[AHIMA Advantage E-Alert](#) is a weekly e-newsletter delivering brief news summaries on important industry, AHIMA, and government news. The focus is on news members can use and apply immediately to their job. Members can view the most recent issue in the main AHIMA [Community of Practice](#).

[Certification Connection](#) is a quarterly e-newsletter helping certified professionals broaden their knowledge of HIM issues and resources while developing professionally. Highlights include articles on professional development, industry news, key findings from employability studies, methods to obtain CEUs, featured credentials, news from the field, and more.

[CodeWrite](#) is a monthly e-newsletter distributed to the coding community; practical news for coding, reimbursement, and healthcare compliance are some areas addressed in this newsletter.

[Foundation Matters](#) is the e-newsletter for donors of the AHIMA Foundation. Published three times per year, it includes information on scholarships, contributions, and planned giving.

[ICD-TEN](#) contains ICD-10 news, updates, information for coders, advice for HIM managers/directors, and ICD-10 products and services, providing the tools and resources needed for ICD-10 implementation.

[Long Term Care Insights](#) is a quarterly e-newsletter distributed to the Long Term Care community. Topics covered include meeting updates, regulatory and legislative information, resources to improve on the job, and practice council updates.

[Research Perspectives](#) is your quarterly source for the development, conduct, and implementation of evidence-based research in health information management.

[Student Connection](#) is distributed in the fall, winter, and spring to HIM students. This e-newsletter features interviews of HIM students past and present, scholarship details, and information on mentoring.

## *Upcoming AHIMA Bylaw Amendment Vote*

In a few weeks, your delegates will be attending the AHIMA Annual Convention in Dallas, TX. One of our responsibilities is to attend the House of Delegates where official AHIMA business is conducted. At this time, we are to represent MHIMA's members with our votes.

This year, there is a bylaws amendment that will come up for a vote. The amendment concerns the apportionment of delegates among the Component State Associations. To read the entire amendment click on the link:

<http://mohima.org/Emails/eAlert090909.doc>

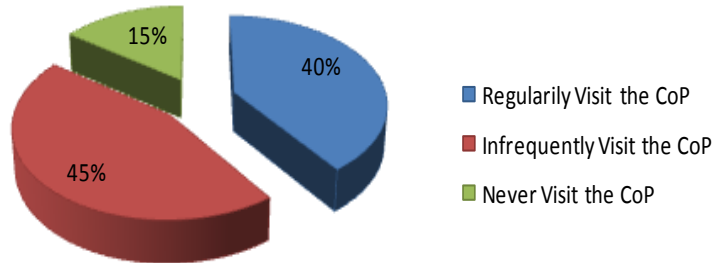
As of December 31, 2008, Missouri had 1201 voting members, or 2.51% of total AHIMA membership, entitling us to 4 delegates. We currently have 5 delegates serving the MHIMA membership. If this amendment passes, beginning with the 2011-2012 House of Delegates, Missouri will have one less delegate, unless we gain another 233 active members.

This is **your** association; please provide us with your feedback on this amendment so we can properly represent the membership of MHIMA. Click on the link to contact your MHIMA [Board Members](#).



## Hot Topics Survey Results

### Visiting the CoP



Last month's survey asked readers if they took advantage of the AHIMA CoP. As the article reported, the Communities of Practice (CoP) will be getting a face lift soon, that there are currently more than 140 different communities to choose from in the CoP and that when members join AHIMA, they are automatically added to the AHIMA community CoP. This community is the "town hall" or meeting place for all members. Items of interest to the entire association are posted in this community including copies of the weekly e-alert and helpful links.

As the chart shows, 40% of respondents said they visit the CoP regularly, 45% visit occasionally and 15% never visit the CoP.

We hope you enjoy taking our surveys and viewing the results. This month's survey results will be posted in the October e-Alert.

## September Hot Topics Survey

The MHIMA Board is considering holding the 2011 Annual Conference in Branson at the Chateau on the Lake. This month's survey asks:

1. I would like the conference to be held in Branson.
2. I do not want the conference to be held in Branson.
3. I will attend the conference at any location the Board chooses.



[Click here to take the survey.](#)



## New MHIMA Store!

Visit the new store on the MHIMA website. Click on the link to

[Shop now for HIT Week November 1-7, 2009!](#)



## Calendar of Upcoming Events

### September, 2009

Sept 29, 2009

#### KCHIMA Meeting

5:30 pm Saint Luke's South –Conference Room B  
to (lower level - near cafeteria)

[MAP](#)

6:30 pm

**Topic:** Medical Guidelines and Related Coding Guidelines (Mainly Heart Monitors)

**Who:** Speaker will be: Ryan Friesen with Medtronic

9/21/09

#### EMHIMA Meeting

4:30 pm SLU at the Allied Health Building  
to Room 1040  
6:00 pm Hickory East Garage is #13 on the map and the Allied Health building is #11 on the map.

[MAP](#)

**Topic:** Your Future in Health Informatics

**Who:** Jeanne Donnelly and Jody Smith

**Where:** SLU in the Allied Health Building room 1040

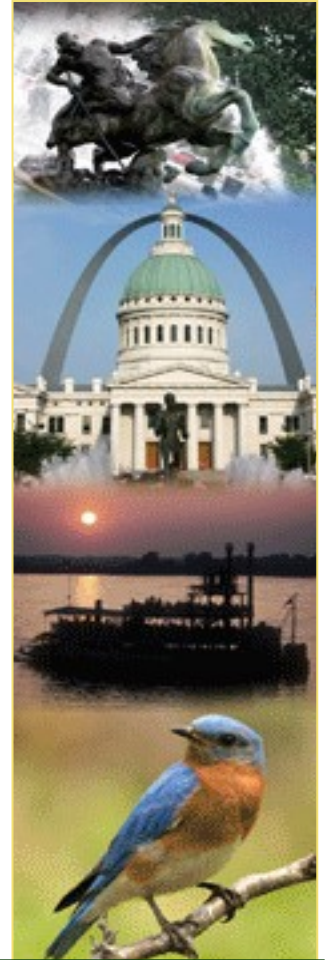
### October, 2009

Oct 16, 2009

**Mid-Missouri Meeting**  
Lake Regional Health System

[MAP](#)

**More Details Coming Soon**



**AHIMA** 2009  
Convention & Exhibit  **GRAPEVINE, TX**  
OCTOBER 3-8, 2009

Join us for the **81st AHIMA**  
Convention and Exhibit



## Learn. Interact. Explore.

Gain great resources at a great value, at the 81st AHIMA Annual Convention and Exhibit!

Relevant education, valuable networking opportunities, and an informative exhibit experience are offered economically, all in one location. Sharpen your knowledge through educational sessions and growth opportunities, **before, during and after convention**. Plus, get a BIG taste of Texas hospitality at the **Gaylord Texan Resort!** Experience authentic Texas style on the shores of Lake Grapevine, just six minutes from Dallas-Fort Worth International Airport.

**It's not too late! [Click here!](#)**



# MHIMA Directory

## MHIMA Board Directory

*Jeff McGraw, RHIT*

President, Chief Delegate

*Jennifer Melvin, RHIA*

President-Elect

*Julie Wolter, MA, RHIA, FAHIMA*

Past President

*Barb Beckett, RHIT*

Director of Communications

*Regina Everett, MPA, RHIA*

Director of Education

*Julie Dooling, RHIT*

Director of Marketing

*Diane Swift, RHIT*

Director of Recruitment

*Mary Jelinek, MS, RHIA*

Annual Meeting Chairperson

*Ann Nowlin, RHIT*

Central Office Coordinator

*Sharon Farley, RHIA*

Treasurer

*Sue LaBonte, RHIA, CHP*

2<sup>nd</sup> Year Delegate

*Maggie Gambill,*

2<sup>nd</sup> Year Delegate

*Jane DeSpiegalaere-Wegner, RHIA, CCS*

1<sup>st</sup> Year Delegate

*Michelle Kornfeld*

Alternate Delegate

## Regional Links

[Click Here for Eastern Missouri](#)



[Click Here for Ozark](#)



[Click Here for Mid Missouri](#)



[Click Here for Pony Express](#)



[Click Here for Kansas City](#)

